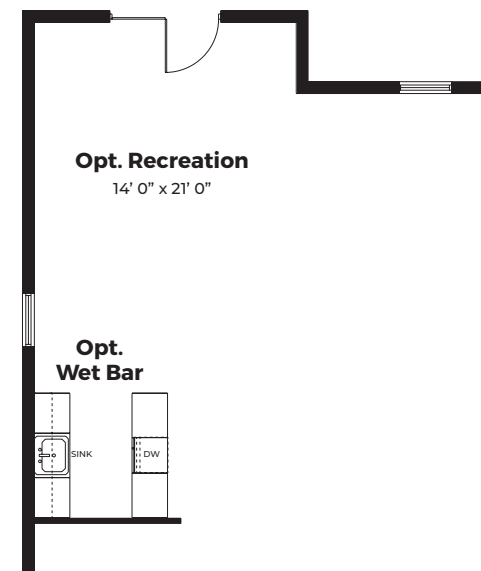


The Emerson

4 Bedrooms | 3.5 Bathrooms | 2-Car Garage | 3,400+ SF



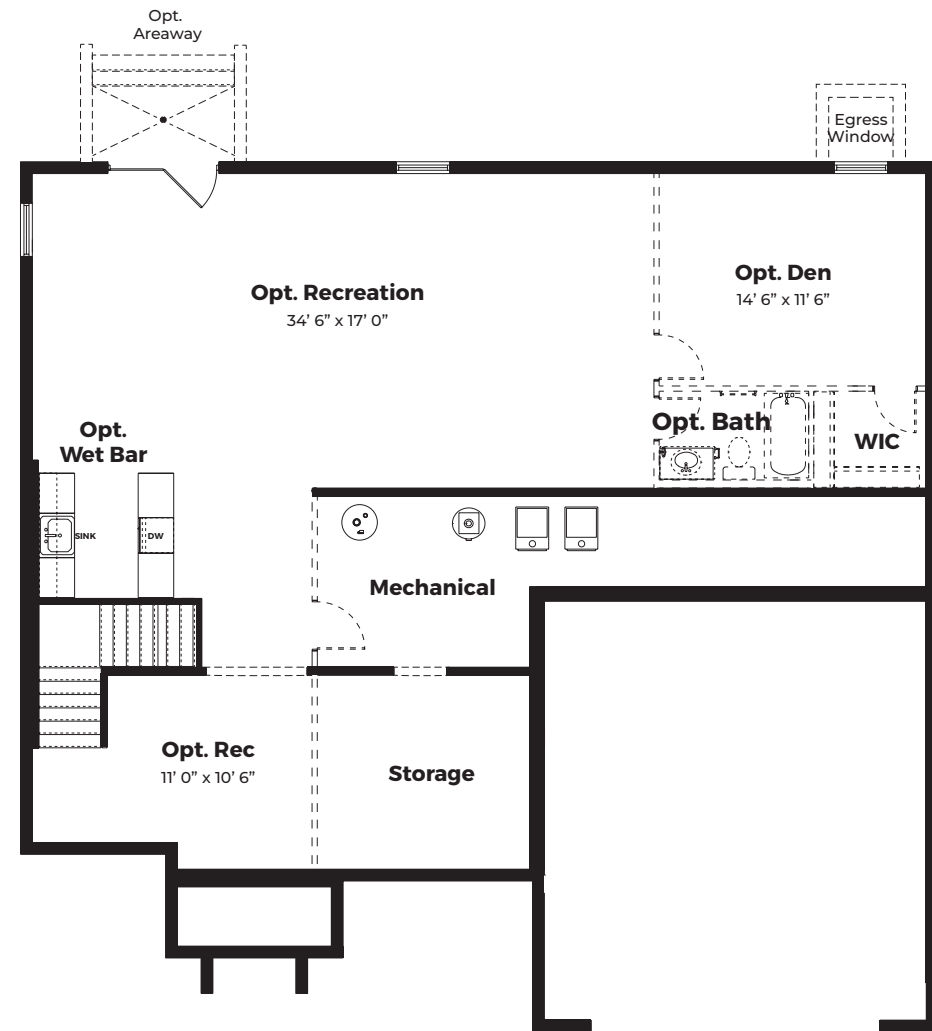
Partial Foundation level with Opt. 4' Great Room Extension



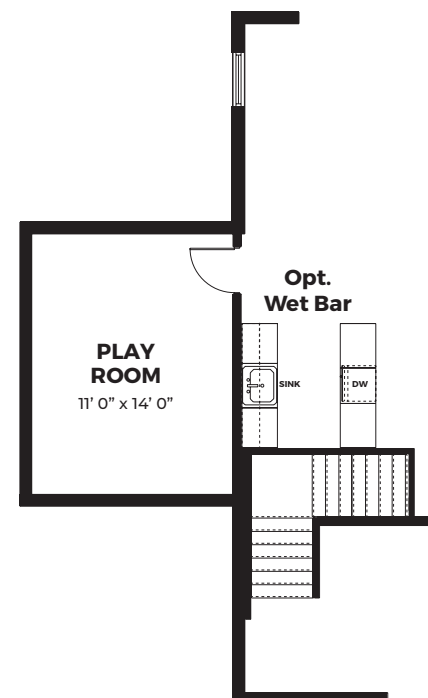
Partial Foundation level with Opt. Morning Room



Partial Foundation level with Opt. Breakfast Nook Bumpout



FOUNDATION



Partial Foundation level with Opt. Sunroom



COTTAGE - PARTIAL STONE



COTTAGE - STONE TO GRADE



EASTERN SEABOARD



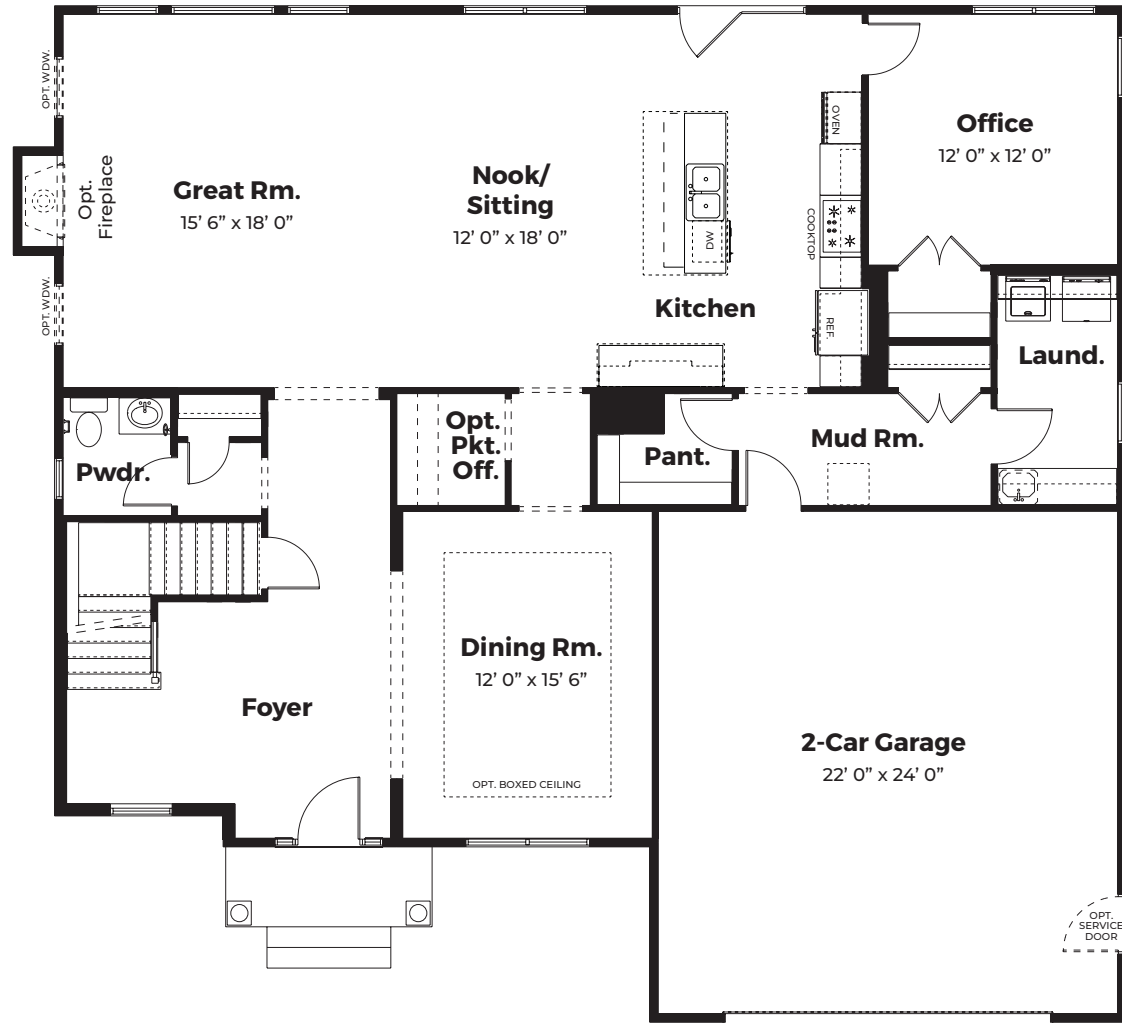
CRAFTSMAN

ATLANTIC
BUILDERS

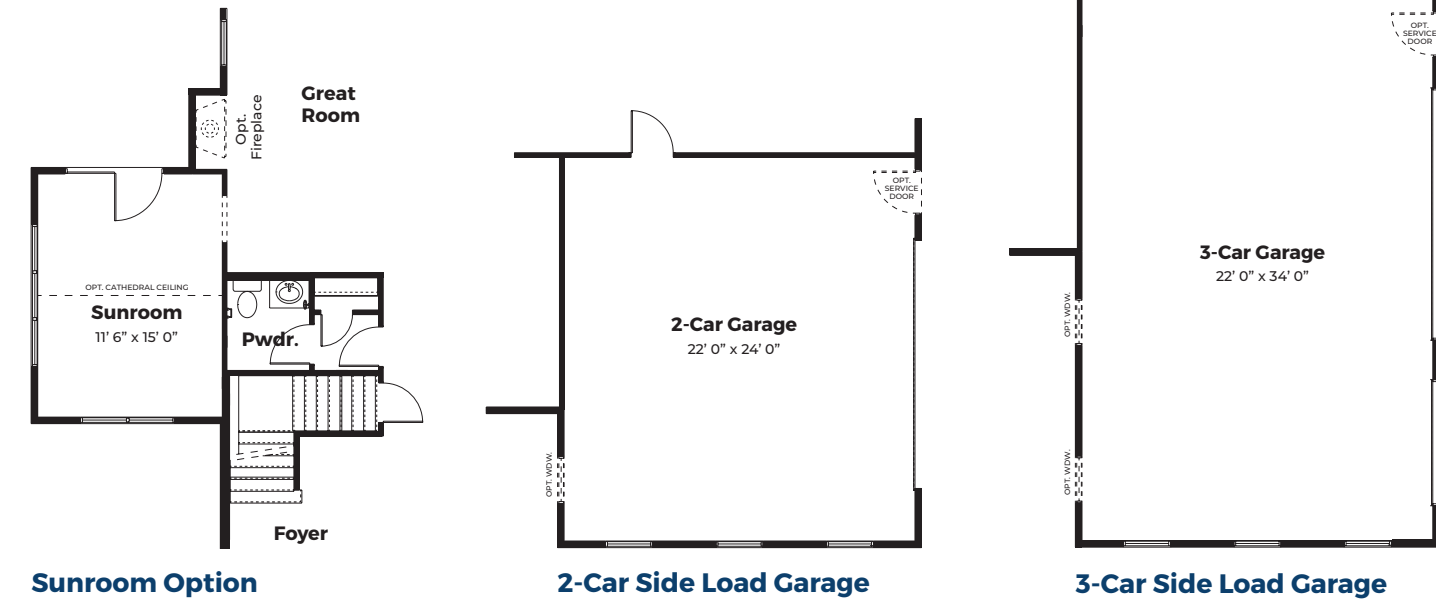
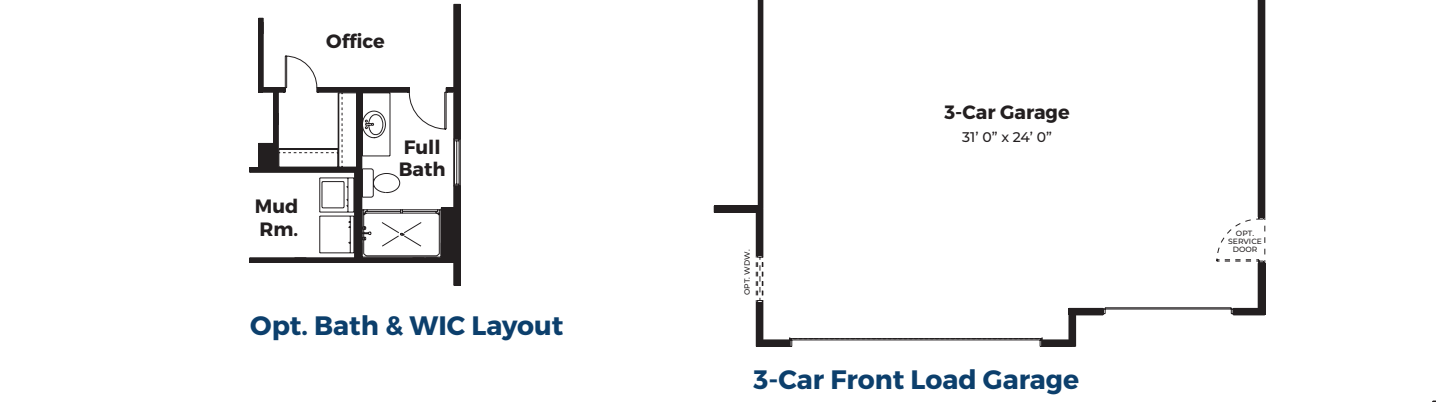
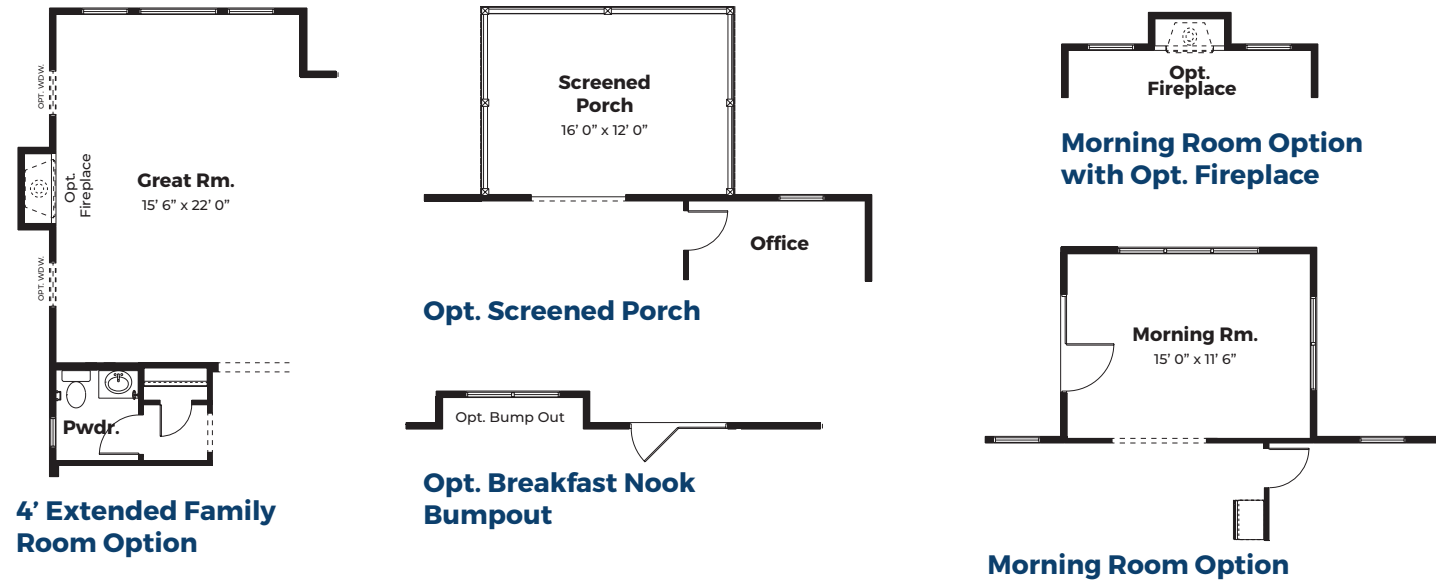
ATLANTICBUILDERS.COM

*These renderings and floorplans are conceptual only. Actual details may vary. This insert is for illustrative purposes only. Atlantic Builders' continuing research and development program means specifications and plans are subject to change without notice. Standard features vary per community. Please consult Community Sales Manager for details.

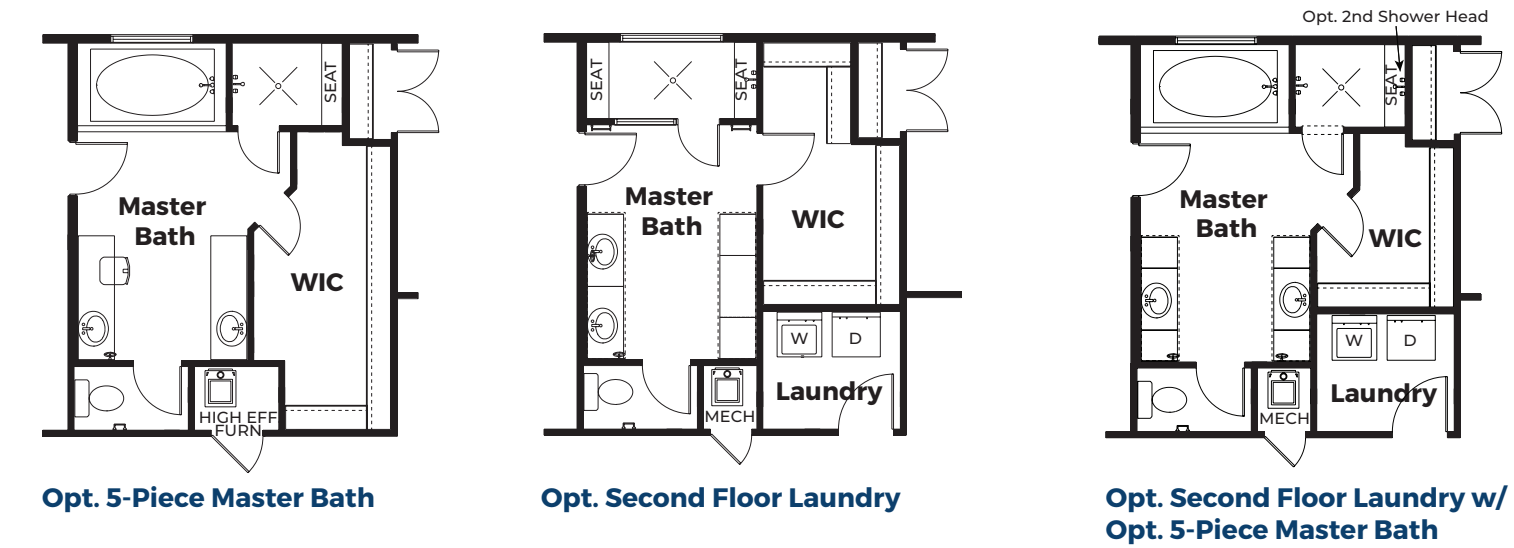
BASE PRICE	
HOMESITE NUMBER	
HOMESITE PREMIUM	
OPTIONS	
TOTAL	



MAIN LEVEL



MAIN LEVEL OPTIONS



UPPER LEVEL

